

Nama : .....

Sekolah : .....



**JABATAN PELAJARAN NEGERI  
WILAYAH PERSEKUTUAN**

---

**SKEMA JAWAPAN**

**PEPERIKSAAN PERCUBAAN  
SIJIL PELAJARAN MALAYSIA 2012**

**3765/1**

**INFORMATION AND COMMUNICATION TECHNOLOGY**

**Answer Sheet / Helaian Jawapan**

**Section A / Bahagian A**

<b>Question No. No. Soalan</b>	<b>Candidate's Answer Jawapan Calon</b>	<b>Marks Markah</b>	
01	B	1	
02	i	Privacy / Privasi	2
	ii	Intellectual Property / Harta Intelek	3
03	B	4	
04	X	Trademark	5
	Y	Copyright	6
05	Pornography / Pronografi	7	
06	C	8	
07	i	Microphone / Keyboard / Midi Keyboard	9
	ii	Speaker / LCD Screen / LCD Projector	10
08	Optical medium / Flash memory	11	
09	C	12	
10	True / Benar	13	
11	C	14	
12	i	Infrared / Infra Merah	15
	ii	X	16
13	Network Operating System / NOS	17	
14	X	IP address	18
	Y	Subnet Mask	19
15	D	20	
16	Icon	21	
17	A	22	
18	i	Animation / Animasi	23
	ii	Implementation / Implementasi	24
19	i	Simbol	25
	ii	Instruction	26
20	i	True / Benar	27
	ii	False / Palsu	28
21	Object Oriented Approach	29	
22	i	Hour / Minute	30
	ii	Selection Control	31
23	Y	Data / Software	32
	Z	Software / Data	33
24	A	34	
25	i	True / Benar	35
	ii	False / Palsu	36

**Section B / Bahagian B**

**Q26**

- a. Two other methods (2m)
  - i. Keyword blocking
  - ii. Web rating system
  
- b. Puan Asiah prevents her son from accessing the content is to avoid her son from inappropriate online communication with unknown person through the internet and to control access to any site that contains sex information. Or any acceptable answers. (2m)

**Q27**

The answer in b. must be compatible with the answer in a.

	<b>X</b>	<b>Y</b>
a. I choose software (1m)	Proprietary Software	Open Source Software
b. Because I choose this software (3m)	<ul style="list-style-type: none"> <li>• The software offers a stable system support if it fails or malfunction.</li> <li>• It is regularly and easily to updated</li> <li>• Software is easier to install</li> <li>• Software is safe and from threats like programming bugs and virus</li> </ul>	<ul style="list-style-type: none"> <li>• Low costs and no license fees</li> <li>• Open standards that facilitate integration with other systems</li> <li>• The source codes are available to users and the users have right to modify the source codes</li> </ul>

**Q28**

- a. Ring topology (1m)
- b. Topology Q: node to node or one direction only  
 Topology R: through central device or both directions (1m)
- c. Advantages : (2m)
  - easy to add and remove nodes
  - a failure of one node does not effect the rest of the network

**Q29**

- a. WYSIWYG (1m)
- b. (2m)

<b>Text-based editor</b>	<b>WYSIWYG editor</b>
Less user friendly (difficult to use)	More user friendly (easy to use)
Require html knowledge	No html knowledge needed
Difficult to insert a specific tag	Easy to insert a specific tag
Cannot visualizes the design	Easy to visualizes the design

- c. One example : (1m)
  - (i) Microsoft FrontPage
  - (ii) Macromedia DreamweaverOr any related answer

**Q30**

- a. **One** constant..

$$\frac{1}{3} \text{ or } \Pi \quad (1m)$$

Justify your answer (1m)

- value does not change during the execution process or
- value that not changeable during the course of the program

- b. Process X (1m)

$$V = \frac{1}{3} \pi r^3 h$$

Output Y (1m)

Print V or Display V

### Section C / Bahagian C

#### Q31

- a. Phase that is omitted by Ahmad is program design. In this phase Ahmad suppose to write an outline of the logic program or pseudo code, create flowchart to look at the logic flow of the program and to design user interface of the program. (3m)
- b. Another translation method is a compiler. Compiler translates entire programming statement of a program into machine language, save it in object code and then executes it later. (2m)
- c. Phase IV is documentation. Documentation is important for people involve in the program in the future, documentation is a reference when problem occur that need programmers to rectify the errors. Documentation also a guide to update and modify program. Program maintenance can easily be done with the help of documentation. (2m)

#### Q32

- a. Two advantages of using computer network. (2m)
  - Easy to communicate
  - Can get more information
  - Share information
  - Printer sharing
  - File and program sharing
  - File and information transfer
- b. Two services provide by using Internet.
  - Blog
  - WWW
  - Email
  - Search Engine
  - Internet Relay Chat
  - Online banking
  - Online payment
  - E-commerce
  - E-learning

c. Network architecture use in SMK Seri Limau is client-server network (1m).

(2m)

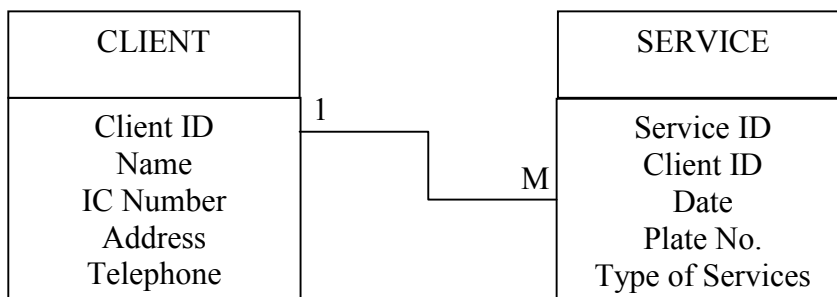
- It is a network in which the shared files and applications are stored in the server but the clients can still stores files in individual PCs.
- Server provides a centralised storage area for programs, data and information.
- Server shares information and resources with clients.
- Server controls access to hardware, software and other resources on the network.
- Clients can requests services or files from the server.
- Server printer provided print services
- Server printer control access to printer.

### Q33

a. X is Client ID (1m)

Client ID is a foreign key. This key links to primary key in form A . By matching the the Client ID in form B with Client ID in form A, the data does not need to be entered repeatedly. (2m)

b. (4m)



- 2m - for 2 tables and correct field name
- 1m - correct line relationship
- 1m - correct relationship 1:m